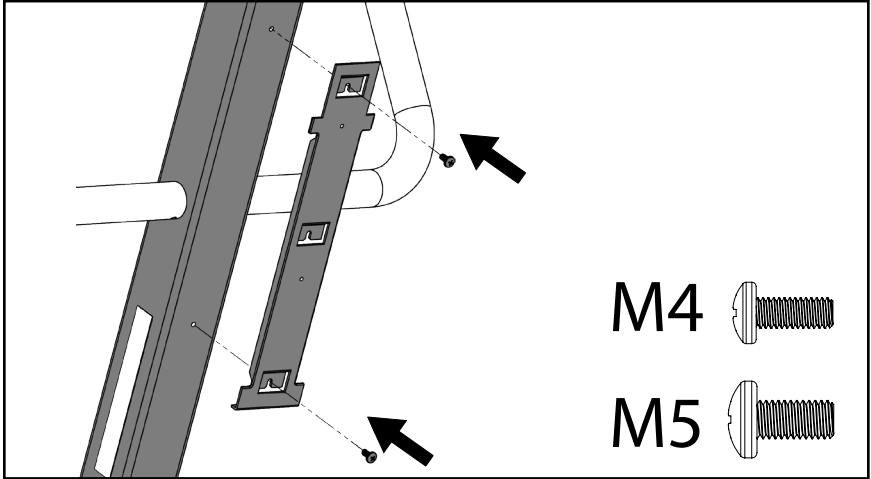
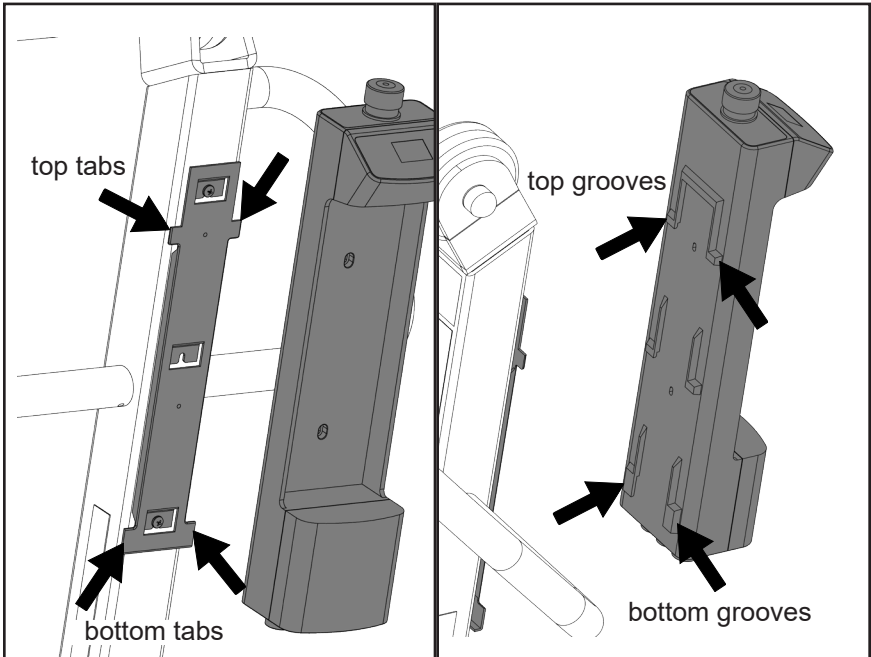


Quick Setup Guide to TiMotion Electronics

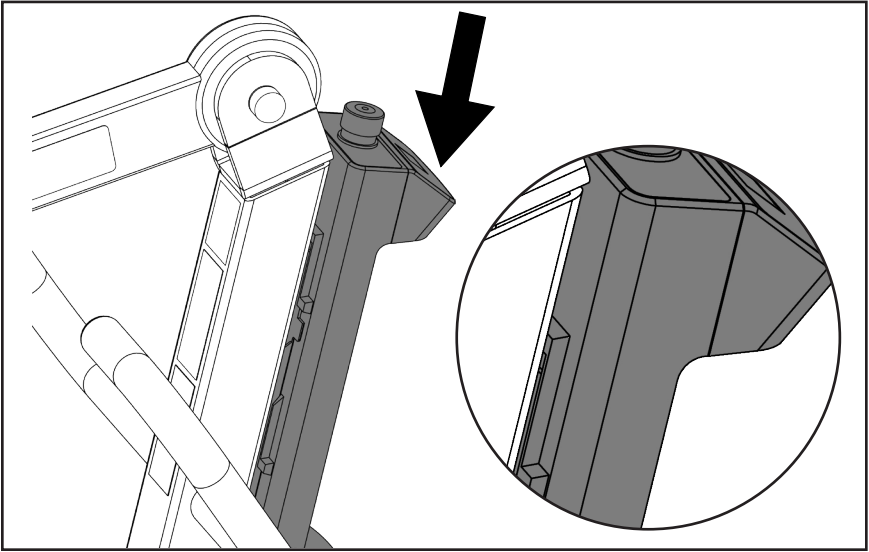
Step 1: Have the flat side of the bracket facing away from the lift, and position the bracket as follows. Secure the metal bracket to the holes on the mast using two M5 screws as follows.



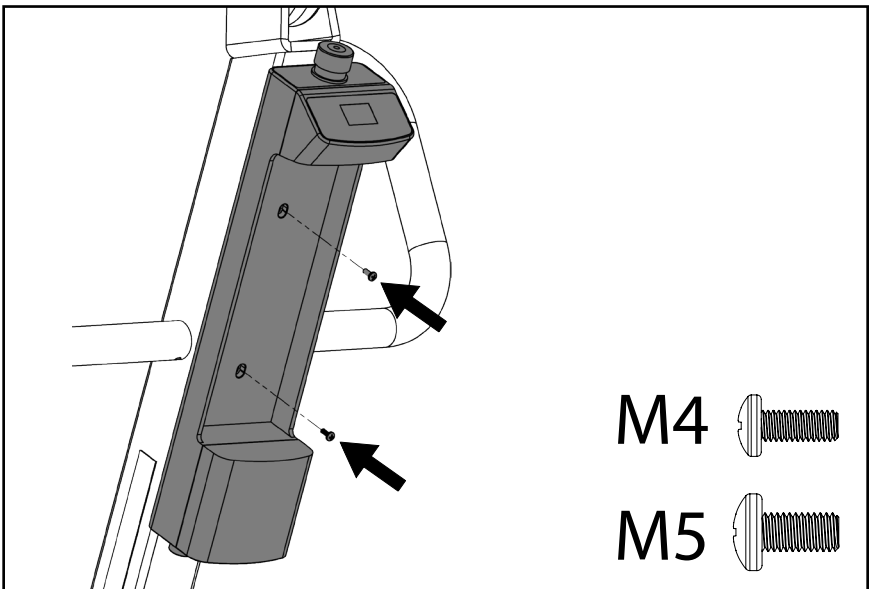
Step 2: Have the top and bottom grooves on the back of the controller align with the top and bottom tabs of the metal bracket as follows.



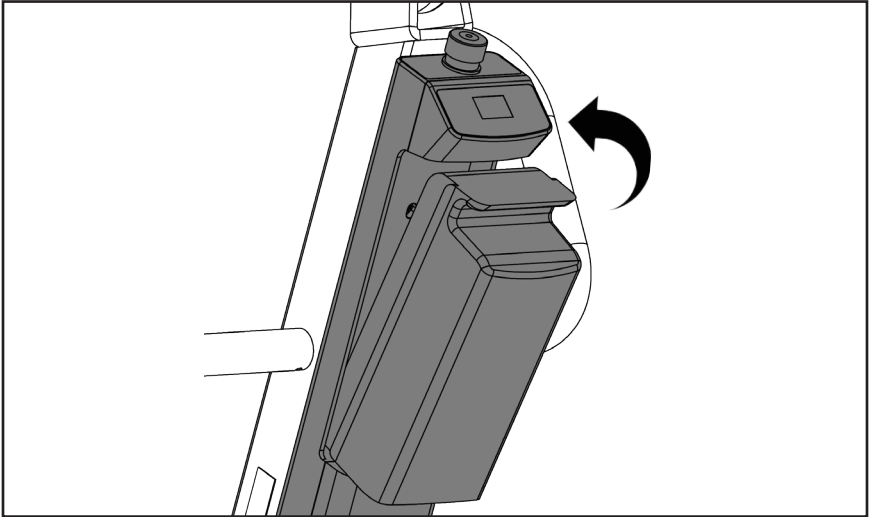
Step 3: Insert the tabs into the grooves on the controller by pressing the controller against the bracket and sliding downward. Make sure the top and bottom tabs are secured inside the grooves.



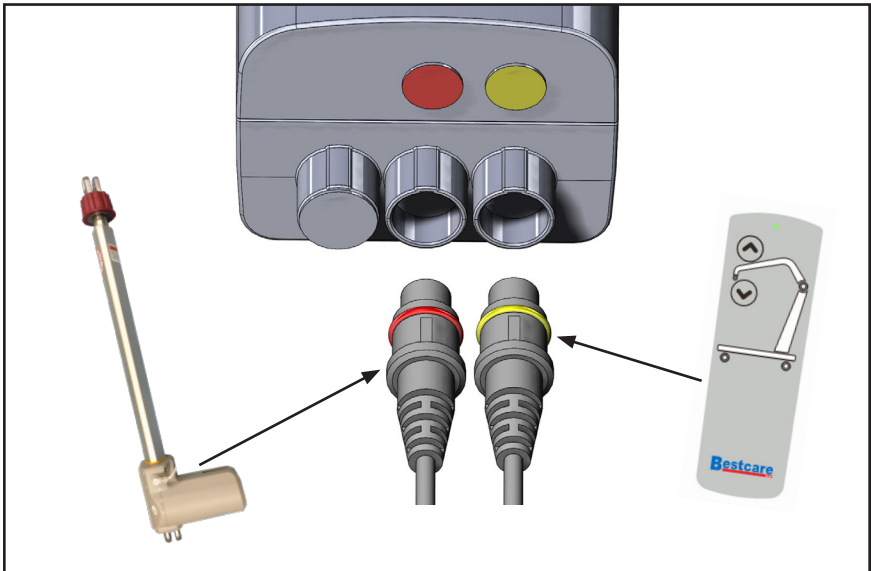
Step 4: Secure the controller to the metal bracket with two M4 screws as follows. Remove the battery pack to see the two holes on the controller if needed.



Step 5: Insert the tab at the bottom of the battery pack into the slot on the controller, and then push the battery pack into the controller. You should hear the battery pack snaps into place.

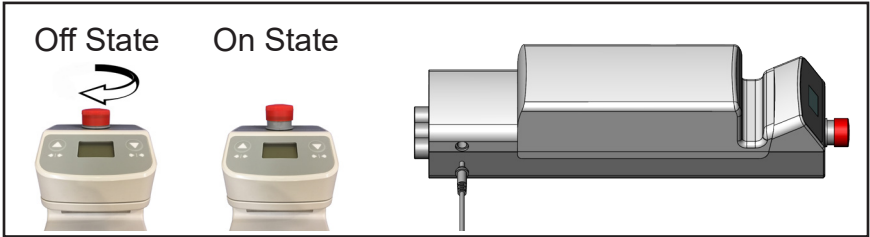


Step 6: Plug the actuator jack to the middle port under the controller, and plug the hand control jack to the right most port under the controller . Make sure align notch on the jack to the groove on the port.

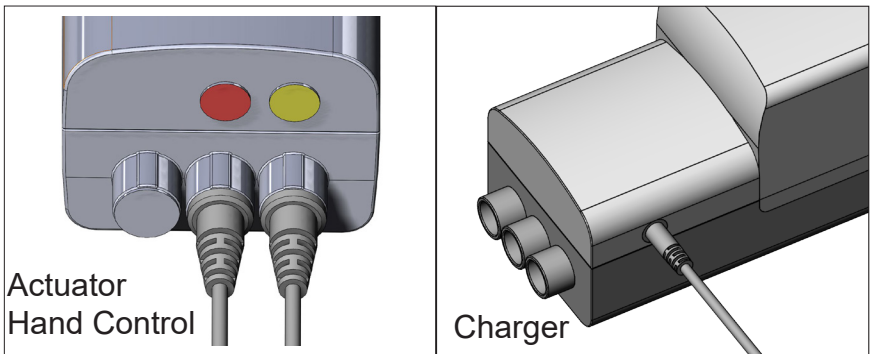


Fully Charge the Battery Before First Use

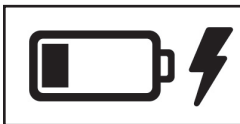
To charge the battery, the controller needs to be turned on, and plug the charger jack into the charging port that is on the side of the controller.



Fully connected jacks should look like following:



Different Display Indications



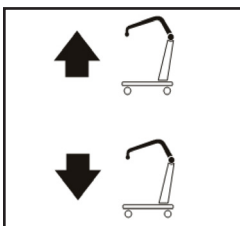
A thunderbolt next to a battery icon indicates the battery is currently charging.



This display indicates the load is over the lift capacity.



This display indicates the battery is depleted.



This display indicates the lift is lifting or lowering.