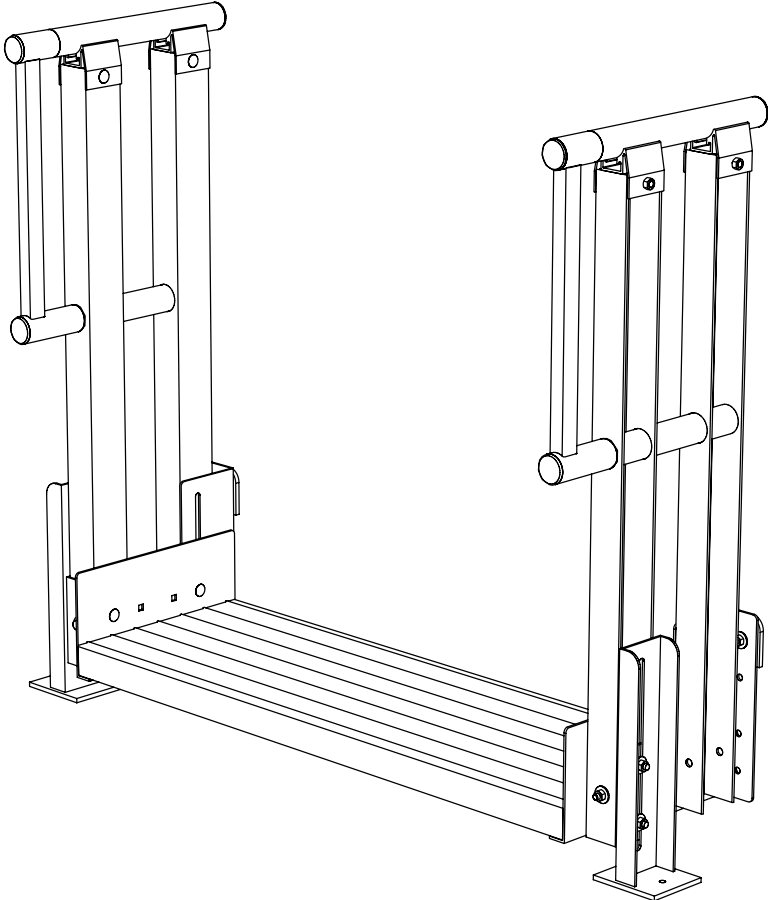


PRAIRIE VIEW INDUSTRIES

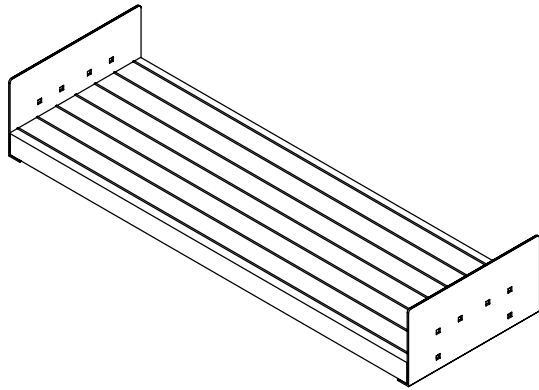
MODULAR ONE STEP STAIR MANUAL



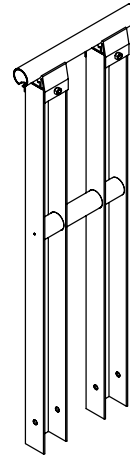
Prairie View Industries

XP3-ONE STEP STAIR : PARTS

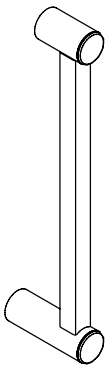
ONE STEP STAIR BASE



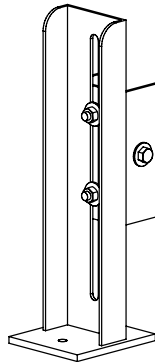
ONE STEP STAIR HANDRAIL



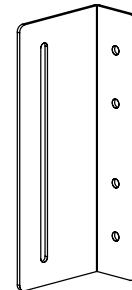
MC END LOOP



12" MODULAR LEG

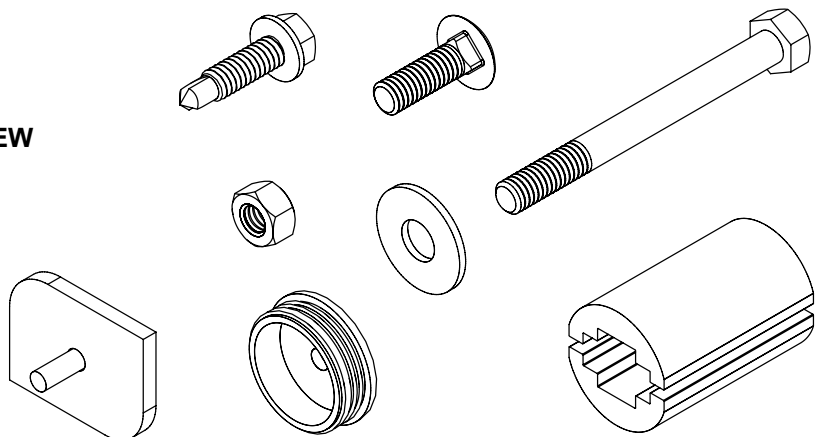


ONE STEP STAIR ATT. BRACKET



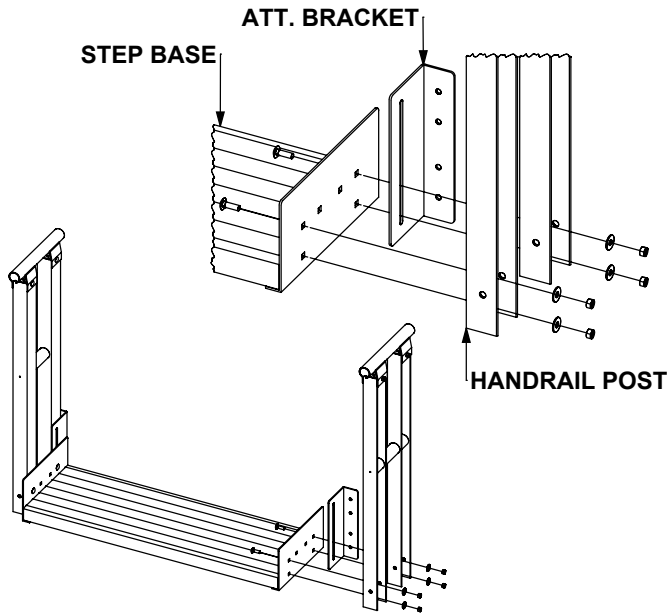
HARDWARE

- 5/16x1 CARRIAGE BOLT
- 5/16x3-1/4 HEX BOLT
- 5/16 SELFLOCK NUT
- 5/16 WASHER
- #14x1 HEX HEAD SELF-TAPPING SCREW
- HANDRAIL SPLICE
- HANDRAIL CAP
- LANDING LONG LEG BLOCK

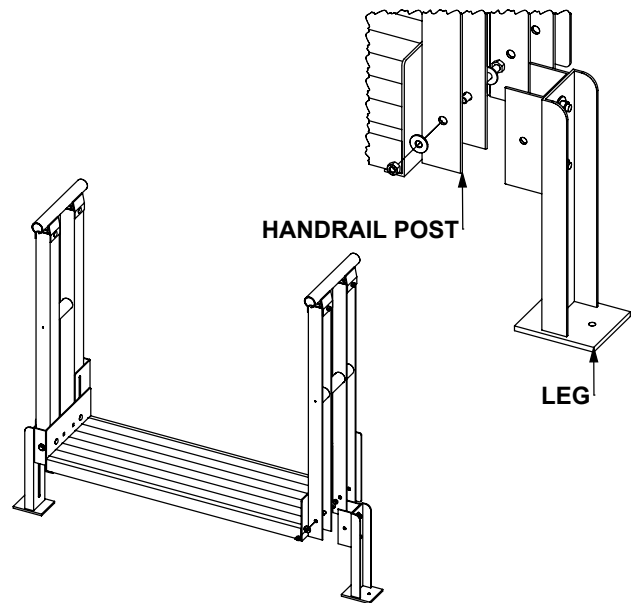


XP3-ONE STEP STAIR : ASSEMBLY

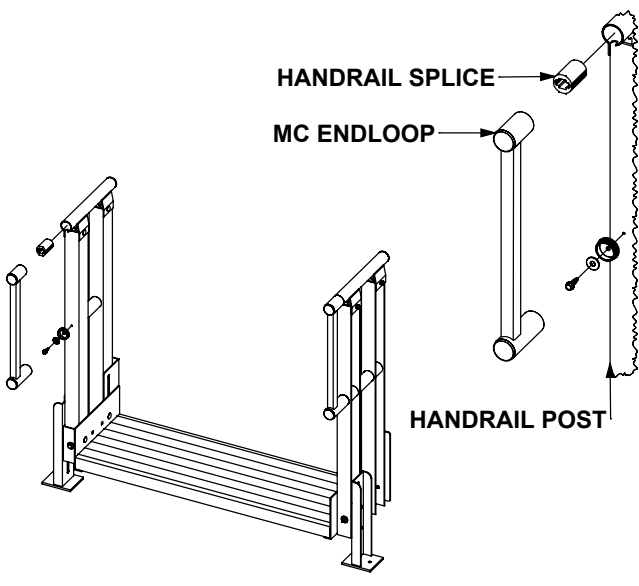
XP3-ONE STEP STAIR ASSEMBLY STEP#1: Attach a handrail and attachment bracket to each side of the step base, on backside of the step base place carriage bolts through the step base, attachment bracket and handrail post, on the frontside place carriage bolts through the step base and handrail post fasten with flat washers, and selflock nuts.



XP3-ONE STEP STAIR ASSEMBLY STEP#2: Attach legs by placing the leg attachment channel over the handrail post align the holes and attach using a hex bolt, flat washer, and selflock nut. To adjust the height, loosen the two selflock nuts on the front side of the leg assembly and set height, once height is set re-tighten selflock nuts.



XP3-ONE STEP STAIR ASSEMBLY STEP#3: Attach an end loop on the outer side of the handrail. Place a handrail splice inside of the handrail tube; using the pre-drilled hole in the handrail post attach the plastic cap to post using a flat washer, and self-tapping screw. Slide standard end loop over the handrail splice and plastic cap, tighten set screw in handrail splice to complete the process.



XP3-ONE STEP STAIR ASSEMBLY STEP#4: Attach one step stair assembly to platform by attaching landing long leg blocks to the already installed attachment brackets. For step rises 7" to 10" use the top hole in the attachment bracket for rises 4" to 6" use the lower hole in the attachment bracket. Place the stem of the landing long leg support block through support bracket and fasten with a flat washer and selflock nut, leaving hardware finger tight. With the landing long leg block attached to the one step stair assembly place the landing long leg block into the channel of the landing base turn the landing long leg block inside of the channel and tighten hardware all the way down.

