



## FEATURES



Powered or Manual Recline



Swing-Away or Fixed Arms



Dual Casters or Pedestal Feet



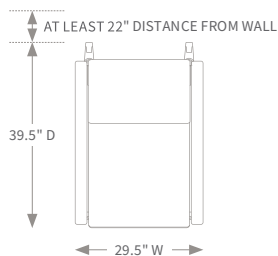
Standard & XL Sizes



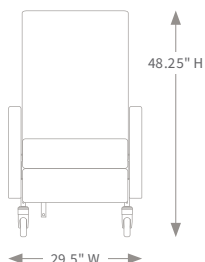
Heat + Massage

## SPACE REQUIREMENTS

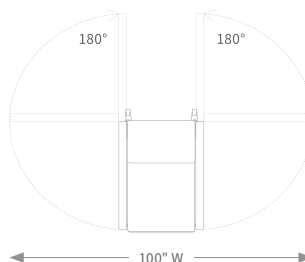
TOP VIEW



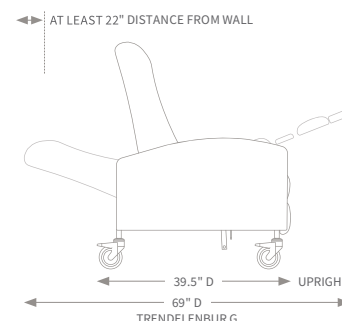
FRONT VIEW



TOP VIEW WITH SWING-AWAY ARMS



SIDE VIEW

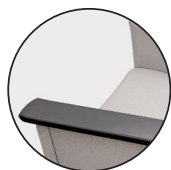


## SPECIFICATIONS

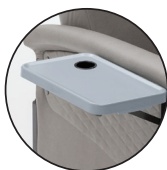
	5" Casters	3" Casters	XL 5" Casters	XL 3" Casters
Manual recline	Yes	Yes	Yes	Yes
Power recline	Yes	Yes	Yes	Yes
Weight capacity	350 lb.	350 lb.	500 lb.	500 lb.
Back height (from floor/from seat)	48.25"/29"	45.25"/29"	48.25"/29"	45.25"/29"
Overall width*	29.5"	29.5"	34"	34"
Seat width	22.5"	22.5"	26.5"	26.5"
Seat height	22.75"	19.75"	22.75"	19.75"
Arm height (from floor, highest point)	29"	26"	29"	26"
Seat depth	22"	22"	22"	22"
Overall upright depth	39.5"	39.5"	39.5"	39.5"
Trendelenburg depth	69"	69"	69"	69"

\*Measured without tables and with arms closed.

## ACCESSORIES



Arm Caps



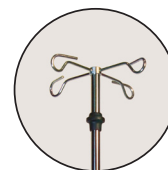
Side Tables



Headrest Cover & Pillow Set



Head Pillow & Lumbar Support



IV Pole